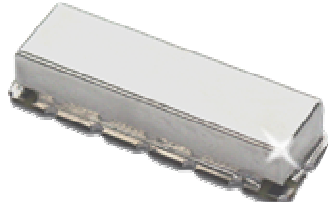


# KR Electronics 2534 Bandpass Filter

## General Description

KR 2534 is a 150 MHz surface mount bandpass filter. Other center frequencies and bandwidths available. Please consult the factory.

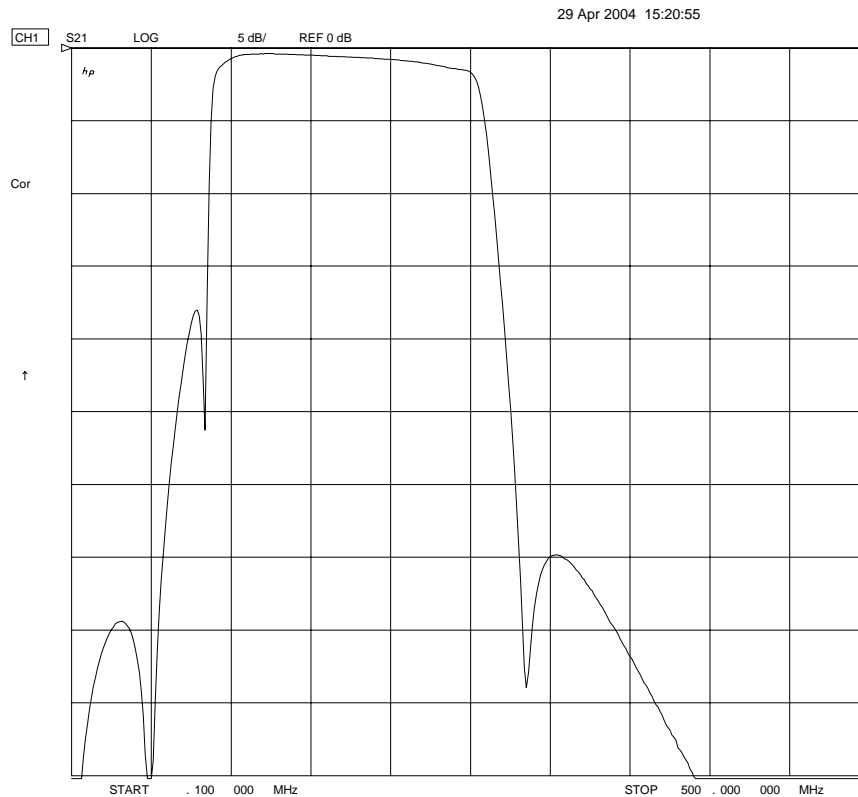


## Features

- Surface Mount Package
- Custom Elliptic Type Design
- 50  $\Omega$  Source and Load

## Typical Performance

### Overall Response (10 dB/div)



KR Electronics, Inc.  
91 Avenel Street  
Avenel, NJ 07001

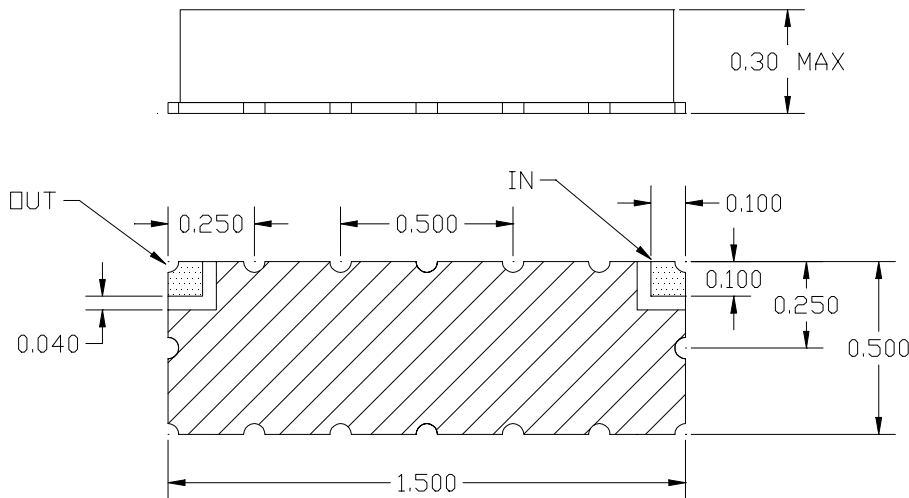
Web [www.krfilters.com](http://www.krfilters.com)  
Email [sales@krfilters.com](mailto:sales@krfilters.com)  
Phone (732) 636-1900  
Fax (732) 636-1982

# KR 2534 Bandpass

## Specifications

Parameter	Specification	
Filter type	Bandpass	
Center Frequency	150 MHz	
Insertion Loss	< 2 dB (0.5 dB typical)	
Specified Passband	135 MHz to 165 MHz	
Passband Phase Linearity	< 2°	Phase matching available
25 MHz & below	> 35 dB	
85 MHz & below	> 10 dB	
285 MHz	> 30 dB	
435 MHz	> 50 dB	
Source and Load	50 Ω	

## Physical Dimensions



Notes:

1. Surface mount package — Metal cover, open frame
2. Dimensions in inches
3. Use SN60 or SN63 solder during installation
4. If boards are cleaned after installation, units must be completely dried to remove any entrapped moisture that will effect electrical