

5

4

3

2

1

ELECTRICAL

FREQUENCY RANGE DC-18GHz

ATTENUATION ACCURACY ——— 0-6.0 +/- 0.30  
 6.5-20 +/- 0.50  
 21-30 +/- 0.75

VSWR (MAX)

DC - 4 GHz ——— 1.2:1 MAX  
 4 - 8 GHz ——— 1.25:1 MAX  
 8 - 12.4 GHz ——— 1.3:1 MAX  
 12.4 - 18 GHz ——— 1.4:1 MAX

POWER (AVE): ——— 2 WATTS DERATE FROM 25°C,  
 10% @ 125°

POWER (PEAK): ——— 250 WATTS, 5 μ SECONDS

IMPEDANCE ——— 50 OHMS  
 OPERATING TEMP RANGE ——— -54°C TO +125°C

MECHANICAL

SMA CONNECTOR HOUSING ——— PASSIVATED STAINLESS STEEL

SMA CONNECTOR CENTER CONTACT ——— GOLD PLATED BERYLLIUM COPPER

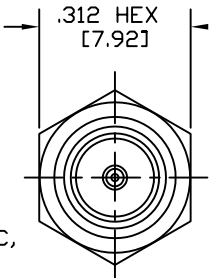
CONNECTOR

INTERFACE IAW MILPRF 39012

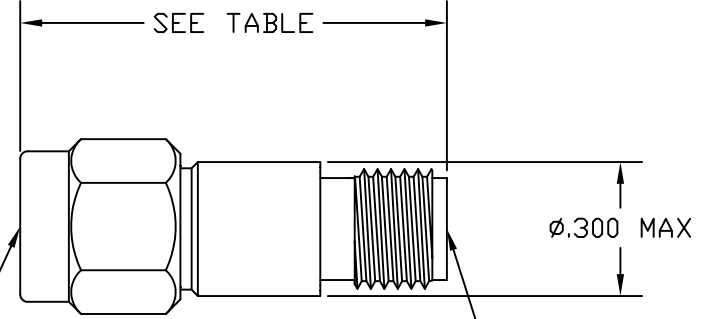
**PRODUCTION  
RELEASE**

NOTE:  
THIS DRAWING INCORPORATES  
THIRD ANGLE PROJECTION  
INTERPRET IAW ANSI Y14.5-1992

REVISIONS			
LTR	DESCRIPTION	DATE	APPROVED
-	CREATED DWG. AND ADDED SPECS.	DATE ENG.	D. SAUNDERS



SMA PLUG PER MIL-STD-348



SMA JACK PER MIL-STD-348

LENGTH TABLE	
dB VALUE	LENGTH
0 - 12	0.86"
13 - 30	1.02"

DRAWING PRACTICES PER ANSI-Y-14.5 MIL-STD-100 & 1000	UNLESS OTHERWISE SPECIFIED TOLERANCES IN:	DRAWN M. TURNER	DATE 09/25/2008
DIMENSIONS ARE IN INCHES AND APPLY BEFORE/AFTER PROCESSING	DECIMALS INCH MM	CHECKED	DATE
SURFACE ROUGHNESS 63 ✓	.X" .03" [.76] .XX" .010" [.25] .XXX" .005 [.127] .XXXX" .0005" [.013]	ENG.	DATE
FINISH# SEE NOTES	ANGLES ±0°30'	THESE DRAWINGS AND SPECIFICATIONS ARE THE PROPERTY OF XMA CORP. OR OMNI SPECTRA AND SHALL NOT BE REPRODUCED, COPIED NOR USED - IN WHOLE OR IN PART - AS A BASIS FOR THE MANUFACTURE OR SALE OF OTHER ITEMS WITHOUT THE EXPRESS WRITTEN PERMISSION OF XMA CORP.	
MATERIAL# SEE NOTES	REMOVE ALL BURRS/SHARP W/ BREAK / R OF .003" TO .0005" UNLESS OTHERWISE NOTED DIAS CONCENTRIC <.003 T.I.R.	NO.	

**XMA** Omni Spectra™  
 150 Dow Street, Manchester, NH 03101  
 P:603-222-2256 F:603-222-2259

TITLE  
**OUTLINE DWG FOR 18 GHz  
SMA ATTENUATOR**

SIZE B	CAGE CODE 3HT76	DRAWING NUMBER 2082-7007-XDB
SCALE 4:1	PLATED AREA XXX	SHEET 1 OF 1

5

4

3

2

1

BCSI