

DC BLOCKING TERMINATION SMP

30 KHz - 23 GHz INNER ONLY



MODELS: 8530PF

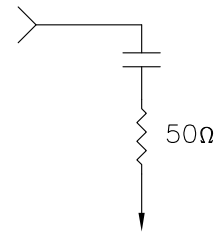
SPECIFICATIONS:

Electrical:

Frequency Range _____ 30 KHz – 23 GHz
VSWR _____ 1.35:1 Max.
Impedance _____ 50 Ohms
Voltage Rating _____ 100 Volts Max DC
Operating Temp. Range _____ -65°C to +125°C

Mechanical:

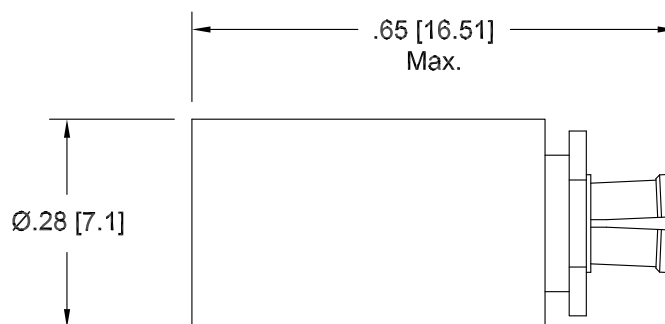
SMP Connectors _____ Gold Plated Beryllium Copper
Mates with MIL-STD-348 & GPO™ Connectors
Conductors ___ Gold Plated Beryllium Copper or Brass
Housing _____ Gold Plated Stainless Steel



SCHEMATIC DIAGRAM

GPO™ is a Trademark of Gilbert Engineering Co., Inc.

Model Number: **8530PF**
SMP Female Connector



Note: Dimensions in Brackets are Expressed in Millimeters and are for Reference Only.
Design specifications are subject to change without notice.
Contact factory for technical specifications before purchasing or use.