

Coaxial Frequency Mixer

ZLW-2H+ ZLW-2H

Level 17 (LO Power +17 dBm) 2 to 1000 MHz



HT-Series
Tight Spot
SMA Wrench
From \$24.95

Maximum Ratings

Operating Temperature	-55°C to 100°C
Storage Temperature	-55°C to 100°C
RF Power	200mW
IF Current	40mA

Permanent damage may occur if any of these limits are exceeded.

Coaxial Connections

LO	1
RF	3
IF	2

Features

- low conversion loss, 6.34 dB typ.
- good L-R isolation, 35 dB typ., L-I, 30 dB typ.
- wideband, 2 to 1000 MHz
- rugged shielded case

Applications

- VHF/UHF
- cellular
- instrumentation

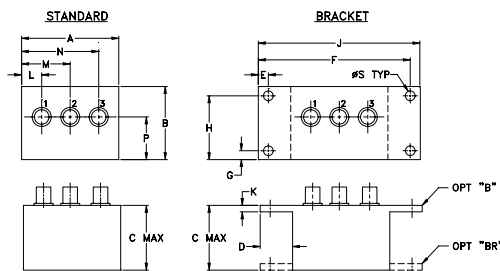
CASE STYLE: M21

Connectors	Model	Price	Qty.
SMA	ZLW-2H(+)	\$64.95 ea.	(1-9)
BRACKET (OPTION "B")		\$5.00	(1+)
BRACKET (OPTION "BR")		\$1.50	(1+)

+RoHS Compliant

The +Suffix identifies RoHS Compliance. See our web site for RoHS Compliance methodologies and qualifications

Outline Drawing



Outline Dimensions (inch/mm)

A	B	C	D	E	F	G	H
1.50	1.13	1.00	.50	.155	2.345	.138	.987
38.10	28.70	25.40	12.70	3.94	59.56	3.51	25.07

J	K	L	M	N	P	S	wt
2.50	.10	.31	.75	1.19	.66	.150	grams
63.50	2.54	7.87	19.05	30.23	16.76	3.81	40.0

Electrical Specifications

FREQUENCY (MHz)	CONVERSION LOSS (dB)	LO-RF ISOLATION (dB)			LO-IF ISOLATION (dB)					
		L	M	U	L	M	U			
2-1000	DC-1000	50	40	35	45	35	30	20	25	20

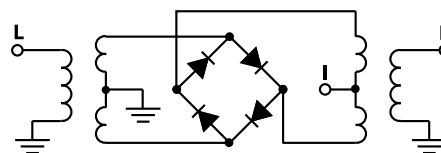
1 dB COMP.: +10 dBm typ.

L = low range [f_L to $10 f_L$] M = mid range [$10 f_L$ to $f_U/2$] U = upper range [$f_U/2$ to f_U]
m = mid band [$2f_L$ to $f_U/2$]

Typical Performance Data

Frequency (MHz)		Conversion Loss (dB)	Isolation L-R (dB)	Isolation L-I (dB)	VSWR RF Port (:1)	VSWR LO Port (:1)
RF	LO	LO +17dBm	LO +17dBm	LO +17dBm	LO +17dBm	LO +17dBm
2.00	32.00	6.71	49.37	47.92	1.29	2.33
34.19	64.19	6.17	46.77	45.60	1.02	2.11
66.39	96.39	6.25	45.81	44.10	1.01	2.15
130.78	100.78	6.14	44.80	41.52	1.01	2.04
195.16	165.16	6.30	43.07	39.47	1.02	2.05
227.36	197.36	6.32	41.46	37.60	1.04	1.99
291.75	261.75	6.23	39.76	35.26	1.05	1.99
356.13	326.13	6.42	38.97	33.32	1.07	1.98
420.52	390.52	6.62	37.70	31.07	1.08	2.04
484.91	454.91	6.65	37.81	29.46	1.09	2.01
517.10	487.10	6.59	37.82	29.13	1.12	2.01
549.30	519.30	6.96	38.18	30.50	1.15	2.02
645.88	615.88	7.10	37.13	29.06	1.30	1.97
678.07	648.07	7.02	33.22	26.56	1.38	1.93
742.46	712.46	6.87	32.76	24.80	1.62	1.92
806.85	776.85	7.04	31.78	23.82	2.00	1.96
871.24	841.24	8.09	32.53	23.46	2.47	1.97
935.63	905.63	8.66	33.52	23.26	3.33	1.98
967.82	937.82	8.70	34.06	22.82	3.56	2.02
1000.00	970.00	8.81	33.66	22.59	3.82	2.11

Electrical Schematic



Notes

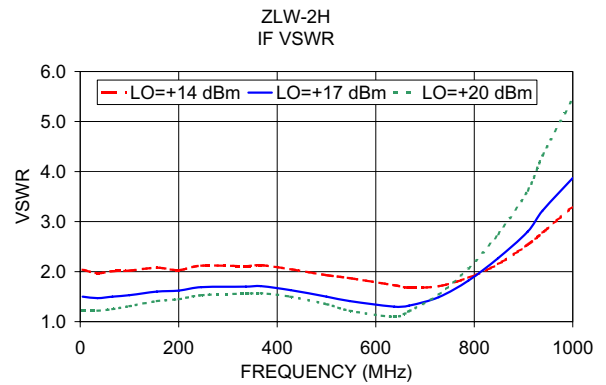
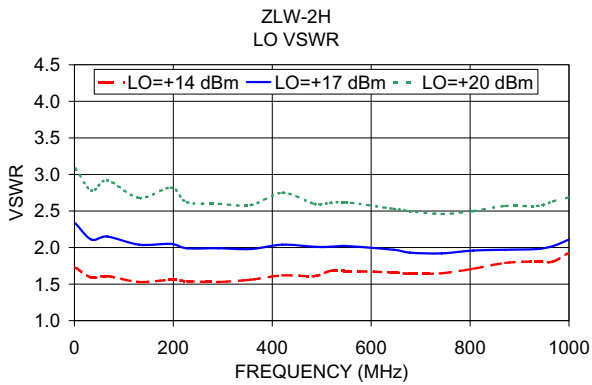
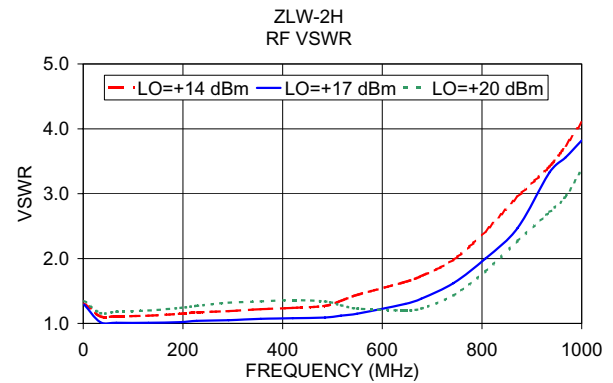
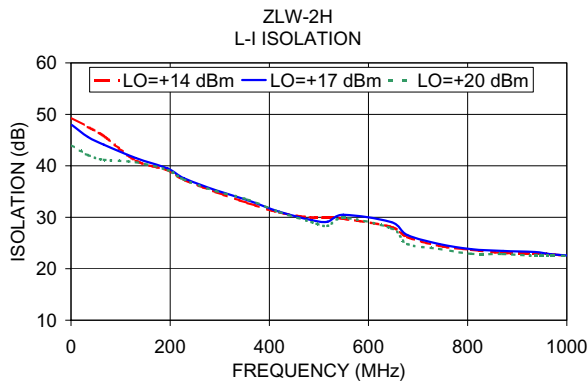
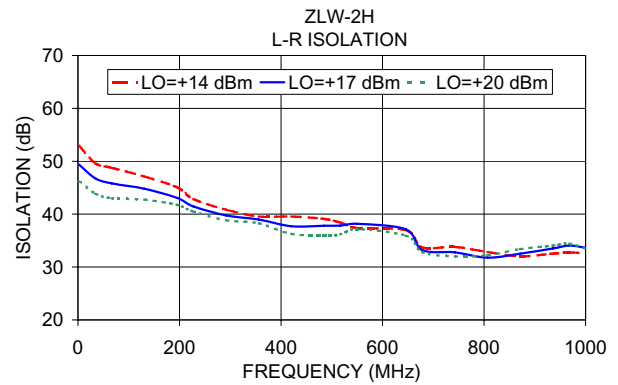
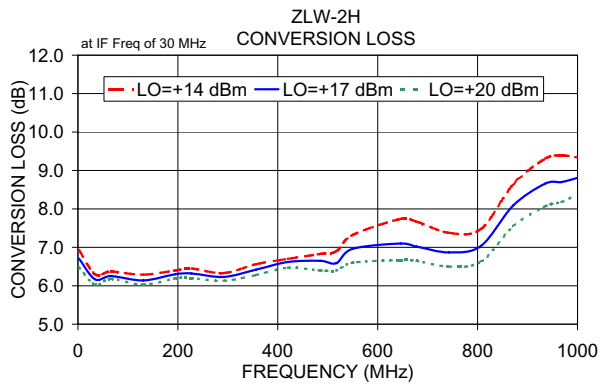
- Performance and quality attributes and conditions not expressly stated in this specification document are intended to be excluded and do not form a part of this specification document.
- Electrical specifications and performance data contained in this specification document are based on Mini-Circuit's applicable established test performance criteria and measurement instructions.
- The parts covered by this specification document are subject to Mini-Circuits standard limited warranty and terms and conditions (collectively, "Standard Terms"); Purchasers of this part are entitled to the rights and benefits contained therein. For a full statement of the Standard Terms and the exclusive rights and remedies thereunder, please visit Mini-Circuits' website at www.minicircuits.com/WCLStore/terms.jsp



www.minicircuits.com P.O. Box 35166, Brooklyn, NY 11235-0003 (718) 934-4500 sales@minicircuits.com

REV. A
M118226
ZLW-2H
DJ/TD/CP/AM
130913

Performance Charts



Notes

- Performance and quality attributes and conditions not expressly stated in this specification document are intended to be excluded and do not form a part of this specification document.
- Electrical specifications and performance data contained in this specification document are based on Mini-Circuit's applicable established test performance criteria and measurement instructions.
- The parts covered by this specification document are subject to Mini-Circuits standard limited warranty and terms and conditions (collectively, "Standard Terms"); Purchasers of this part are entitled to the rights and benefits contained therein. For a full statement of the Standard Terms and the exclusive rights and remedies thereunder, please visit Mini-Circuits' website at www.minicircuits.com/WCLStore/terms.jsp

