

Bandpass Filter

RBP-415+

50Ω 404 to 426 MHz

Maximum Ratings

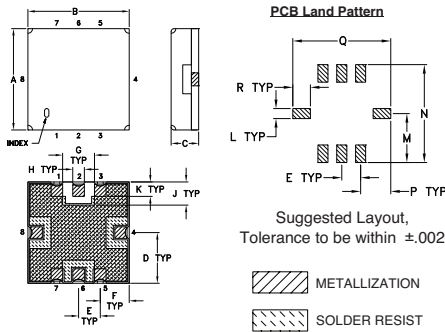
Operating Temperature	-40°C to 85°C
Storage Temperature	-55°C to 100°C
RF Power Input	0.5W at 25°C

Permanent damage may occur if any of these limits are exceeded.

Pin Connections

RF IN	2
RF OUT	6
GROUND	1,3,4,5,7,8

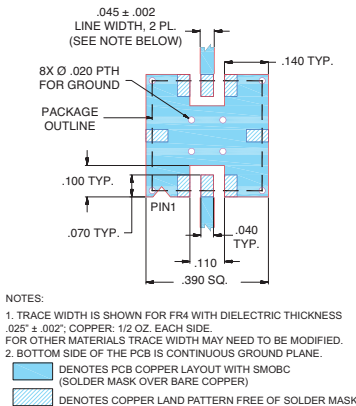
Outline Drawing



Outline Dimensions (inch/mm)

A	B	C	D	E	F	G	H	J
.350	.350	.100	.175	.075	.100	.110	.040	.080
8.89	8.89	2.54	4.45	1.93	2.54	2.79	1.02	2.03
K	L	M	N	P	Q	R	wt	
.050	.040	.195	.390	.120	.390	.070	grams	
1.27	1.02	4.95	9.91	3.05	9.91	1.78	0.25	

Demo Board MCL P/N: TB-332 Suggested PCB Layout (PL-176)

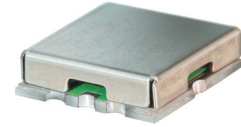


Features

- linear phase, up to ±7deg typ. @ Fc ±45MHz
- good VSWR, 1.2:1 typ. @ passband
- small size 0.35" x 0.35"
- shielded case
- aqueous washable

Applications

- harmonic rejection
- transmitters / receivers
- CDMA



CASE STYLE: GP731
 PRICE: \$13.70 ea. QTY (10)

+RoHS Compliant

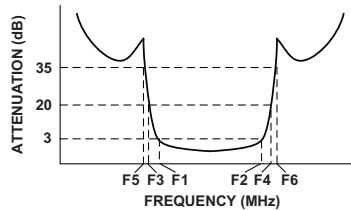
The +Suffix identifies RoHS Compliance. See our web site for RoHS Compliance methodologies and qualifications

Reel Size	Available Tape and Reel at no extra cost
7"	10, 20, 50, 100, 200
13"	500, 1000

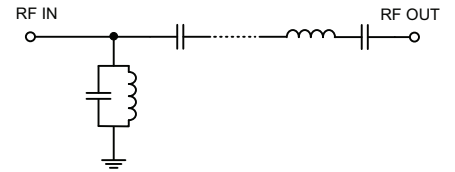
Bandpass Filter Electrical Specifications (T_{AMB} = 25°C)

CENTER FREQ. (MHz)	PASSBAND (MHz) (Loss < 3dB)	STOPBANDS (MHz)					MAXIMUM DEVIATION FROM LINEAR PHASE (deg.)	VSWR (:1)	
		Loss > 20dB		Loss > 35dB				Passband	Stopband
Fc	F1 - F2	F3	F4	F5	F6	Fc ± 45MHz	Max.	Typ.	
415	404 - 426	225	550	120	750-2000	±10	1.7	18	

Typical Frequency Response

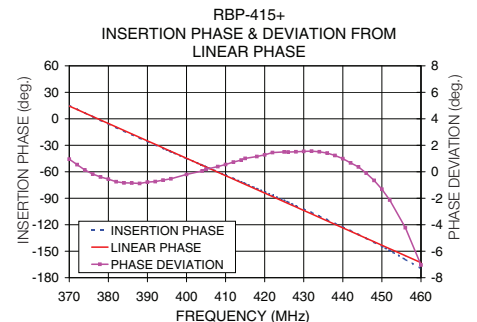
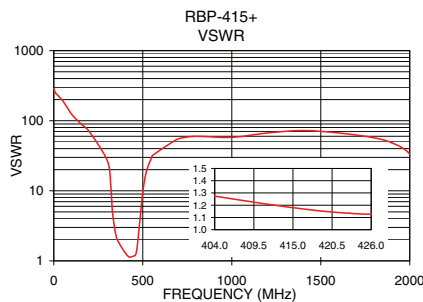
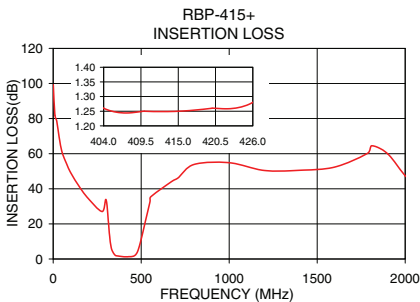


Functional Schematic



Typical Performance Data at 25°C

Frequency (MHz)	Insertion Loss (dB)	VSWR (:1)	Frequency (MHz)	Deviation from Linear Phase (deg)
0.3	99.29	289.53	370.0	0.95
50.0	61.00	193.02	374.0	0.13
120.0	45.73	108.58	380.0	-0.56
225.0	31.41	59.91	386.0	-0.85
318.0	15.95	13.81	390.0	-0.78
328.0	7.41	5.85	396.0	-0.53
340.0	3.23	2.65	404.0	0.06
404.0	1.26	1.27	410.0	0.55
425.0	1.28	1.13	415.0	1.01
426.0	1.28	1.13	422.0	1.45
475.0	3.35	2.24	426.0	1.49
490.0	7.48	5.59	436.0	1.41
510.0	15.50	13.92	440.0	0.99
550.0	32.64	29.96	446.0	-0.11
750.0	49.35	53.46	450.0	-1.32
900.0	66.98	57.91	456.0	-4.22
2000.0	47.47	33.42	460.0	-7.04



For detailed performance specs & shopping online see web site

P.O. Box 350166, Brooklyn, New York 11235-0003 (718) 934-4500 Fax (718) 332-4661 The Design Engineers Search Engine Provides ACTUAL Data Instantly at minicircuits.com

Notes: 1. Performance and quality attributes and conditions not expressly stated in this specification sheet are intended to be excluded and do not form a part of this specification sheet. 2. Electrical specifications and performance data contained herein are based on Mini-Circuit's applicable established test performance criteria and measurement instructions. 3. The parts covered by this specification sheet are subject to Mini-Circuit's standard limited warranty and terms and conditions (collectively, "Standard Terms"); Purchasers of this part are entitled to the rights and benefits contained therein. For a full statement of the Standard Terms and the exclusive rights and remedies thereunder, please visit Mini-Circuit's website at www.minicircuits.com/MCLStore/terms.jsp.