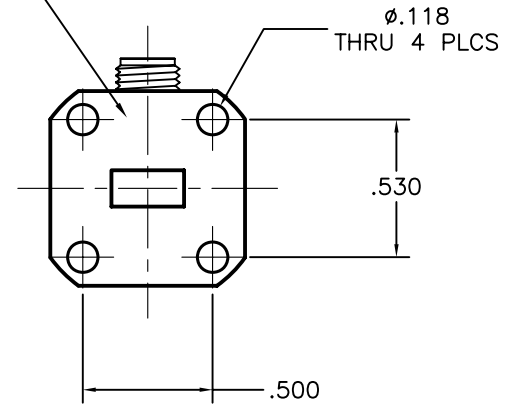
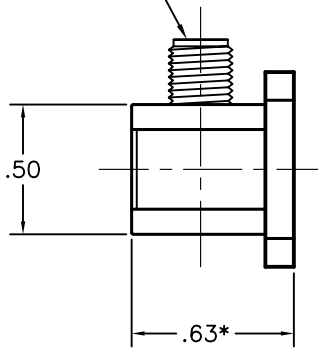
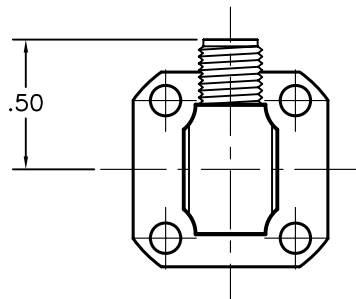


2.92(F) "K" CONNECTOR,
1/4-36 UNS-2A THD.

STD. WR28 FLANGE,
(COVER SHOWN)



*NOTE: DIMENSION MAY CHANGE IF ORDERING
NON-STANDARD FLANGE TYPE

MODEL SPECIFICATIONS

MECHANICAL

MODEL NUMBER: 28-25KZX-X

W/G SIZE: WR28

MATERIAL:

BODY: PER ORDER (ALUM. OR BRASS)

CONNECTORS: STAINLESS STEEL

FINISH: UNIQUE CORROSION RESISTANT

316 STAINLESS STEEL EPOXY COATING

FLANGES: PER ORDER, COVER TYPE SHOWN

ELECTRICAL

FREQ. RANGE: 26.5 - 40.0 GHz

POWER: 10W CONTINUOUS, 1KW PEAK

VSWR: 1.25 MAX.

THIRD ANGLE PROJECTION:		APPROVALS	DATE	ADVANCED TECHNICAL MATERIALS, INC. TEL: (631) 289-0363 FAX: (631) 289-0358 www.atmmicrowave.com		<small>THE INFORMATION IN THIS DRAWING IS PROPRIETARY AND SHALL NOT BE USED OR DISCLOSED WITHOUT THE PRIOR WRITTEN CONSENT OF AT&T, INC. DO NOT SCALE DWG.</small>	
UNLESS OTHERWISE NOTED, DIMENSIONS ARE IN INCHES, TOLERANCES ARE: FRACTIONS: ±1/64 ANGLES: ±1/2°		DRAWN M.R.	9/4/08			WR28 WG-COAX OUTLINE	
BASIC DIMENSION	DECIMALS 2 PLACE 3 PLACE	APRVD.		SCALE 1 : 1 MODEL # 28-25KX-X SHEET 1/1			
UNDER 6"	±.02 ±.005	MATERIAL ALUM OR BRASS					
6" - 12"	±.03 ±.010	TREATMENT CHEM. FILM					
OVER 12"	±.06 ±.015	FINISH ATM GRAY					