

SPEC SHEET

MW500-1528

2160 MHz to 2620 MHz

VOLTAGE CONTROLLED OSCILLATORS



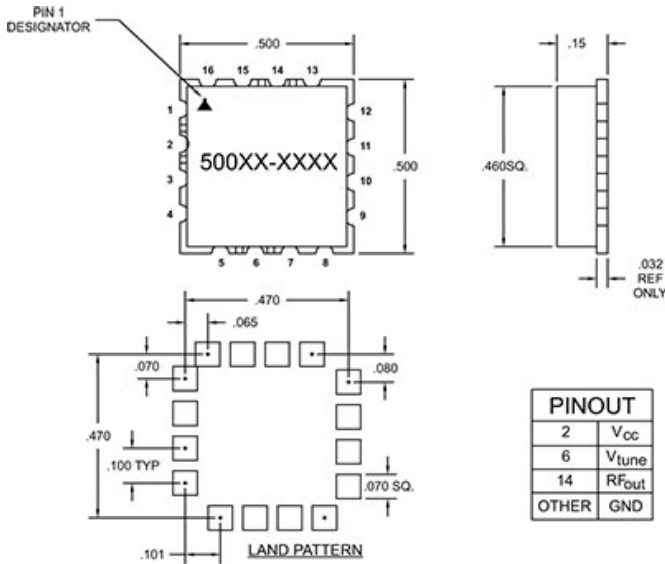
Specifications

Frequency	2160 MHz to 2620 MHz
Tuning Voltage	1/10 V
Power Output	5 +/- 2 dBm
Phase Noise	10 kHz Offset -95 (typ) dBc/Hz 100 kHz Offset -117 (typ) dBc/Hz
Frequency Pushing	5 MHz/V
Frequency Pulling	8 MHz
Harmonic Suppression	-12 (MAX)

Operating Specifications

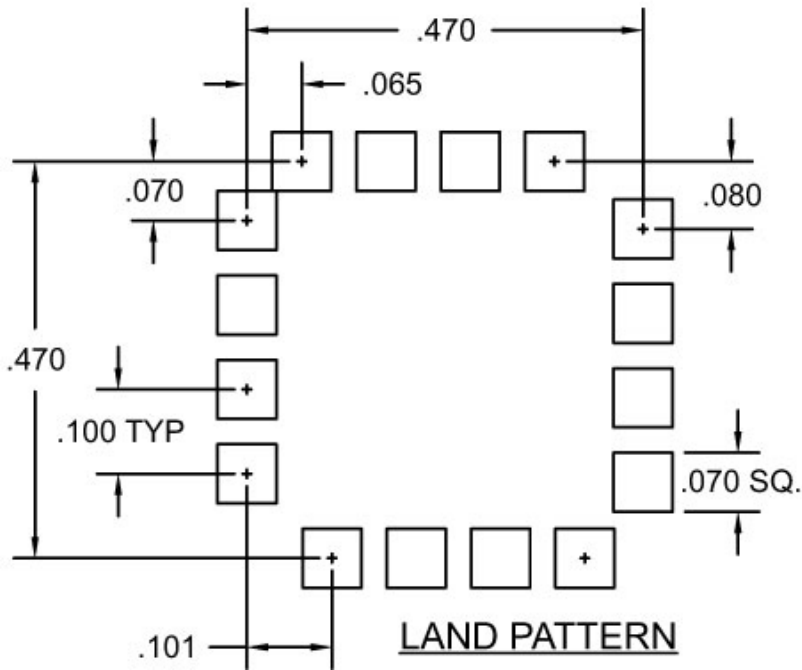
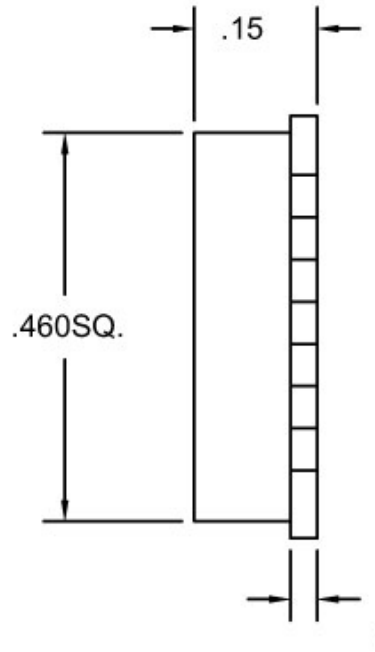
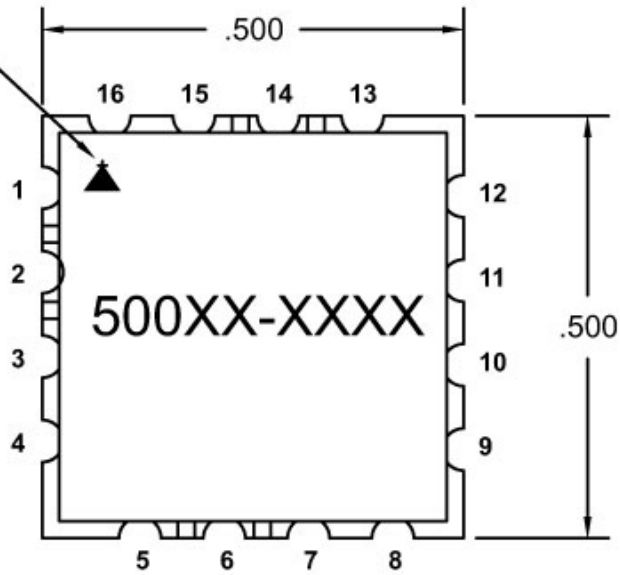
Supply Voltage	6.5 Vcc
Supply Current	35 mA
Load Impedance	50
Operating Temperature	-40 to 80 °C

Notes



MERCURY COMMERCIAL ELECTRONICS

PIN 1
DESIGNATOR



PINOUT	
2	V _{cc}
6	V _{tune}
14	R _{Fout}
OTHER	GND